

Central Wyoming College Organizational Chart

Board of Trustees
Gay Hughes
Paula Hunker
Ernie Over
Nichole Shoening
Shana Tarter
Craig Tolman
Carlton Underwood

Board of Trustees

Brad Tyndall
President

Paula Hartbank
Executive Assistant to the President
and Board of Trustees

Beth Monteiro
Executive Director, CWC Foundation

Kathy Wells
Vice President of Academic Affairs

Willie Noseep
Vice President of Administrative
Services

Cory Daly
Vice President of Student Affairs

Jennifer Marshall-Weydevel
Executive Director of Marketing and
Public Relations

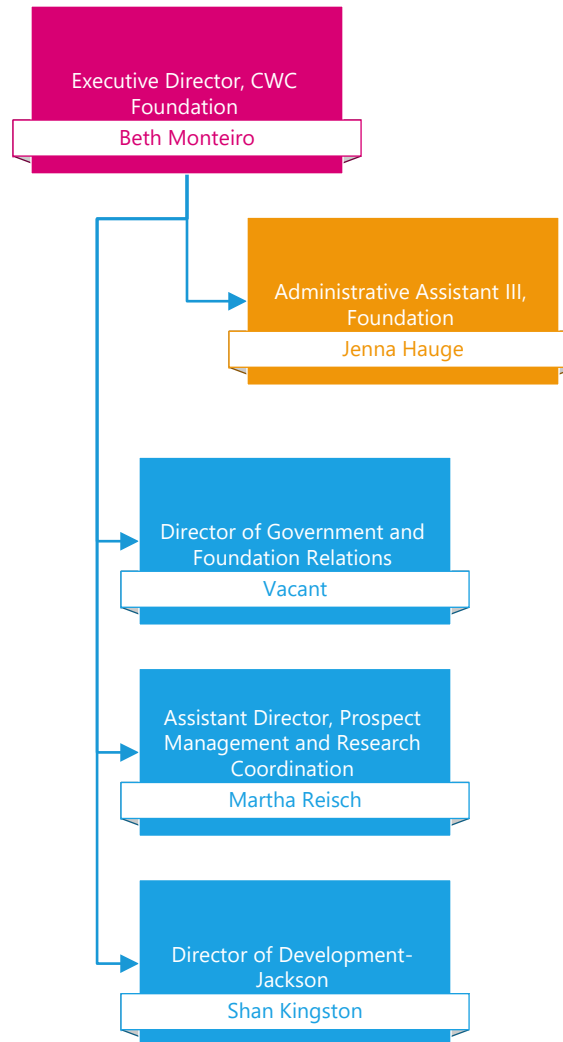
Catherine Trough
Executive Director of Institutional
Effectiveness and Research

Terry Dugas
General Manager, Wyoming PBS

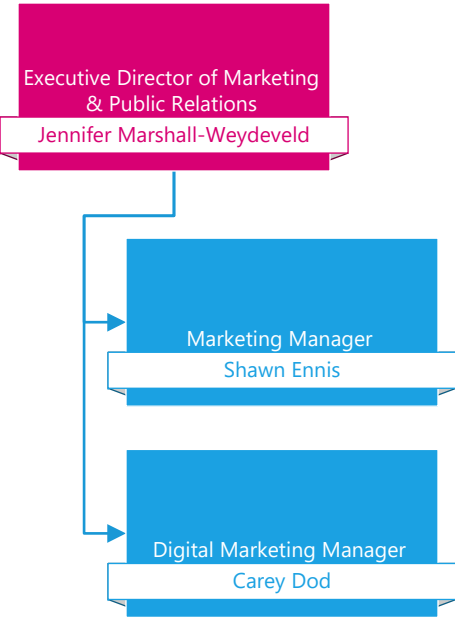
John Wood
Chief Information Officer

Jesse Morris
Institutional Researcher

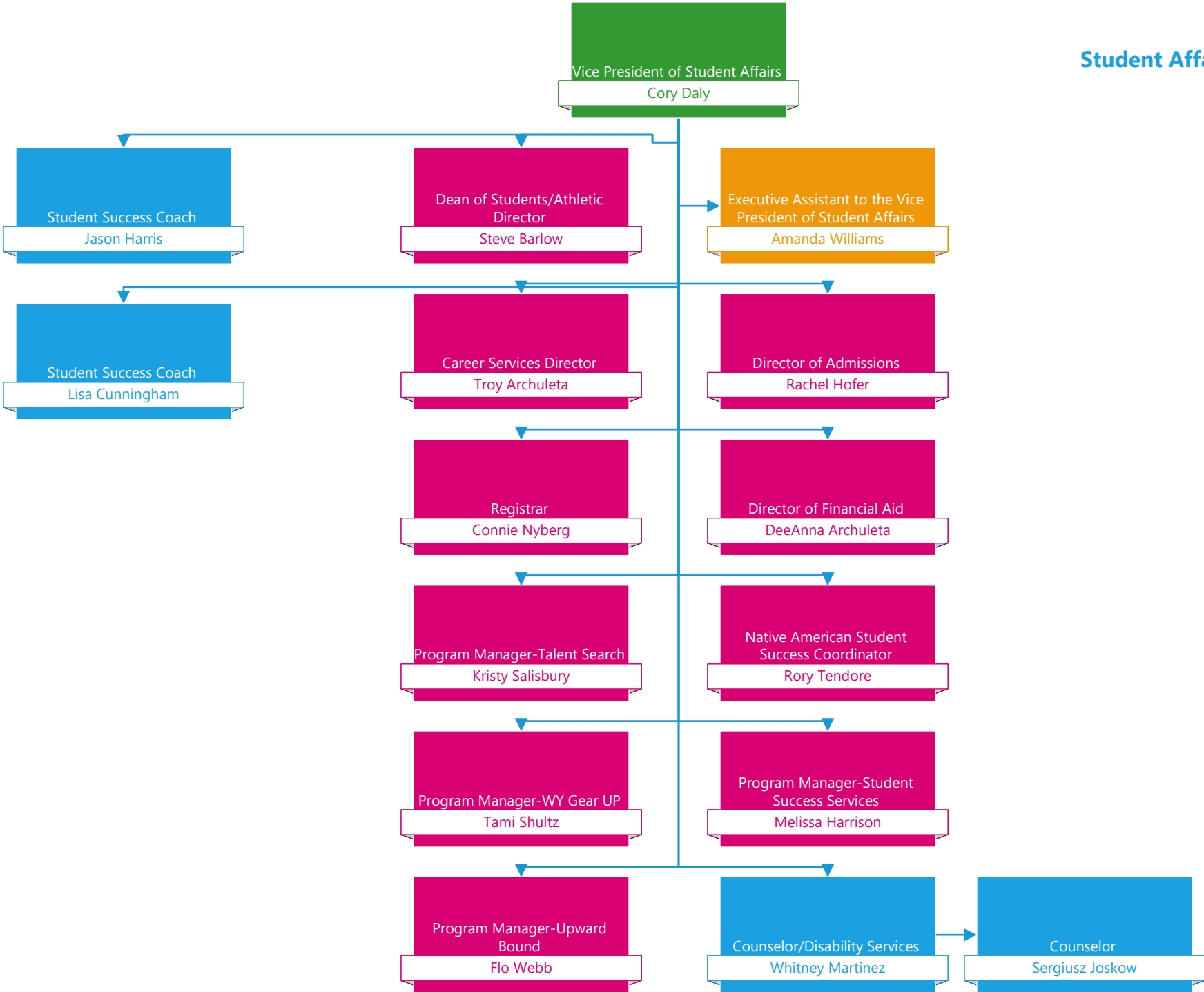
Susan Yun
Institutional Researcher

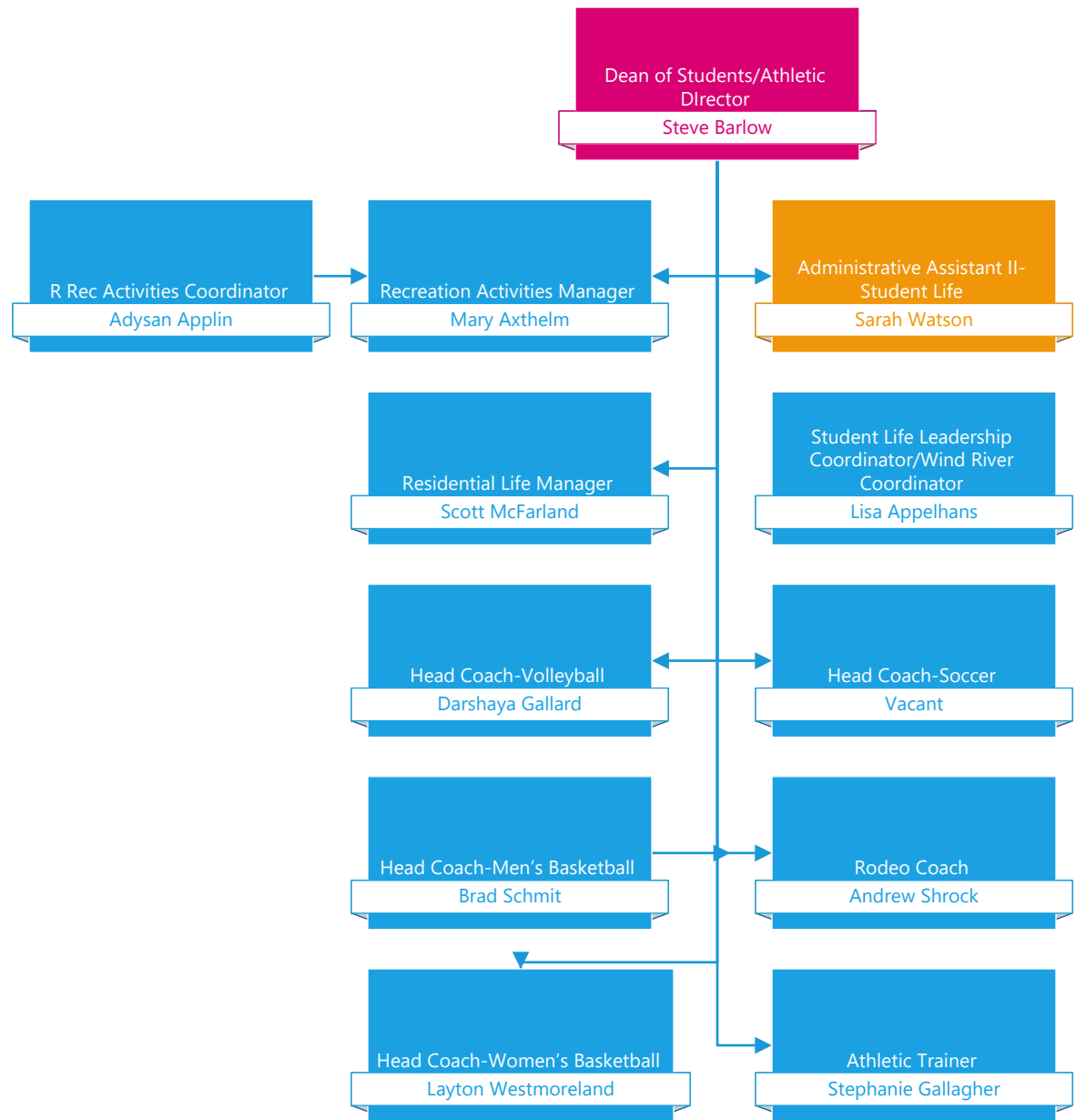


Marketing & Public Relations



Student Affairs

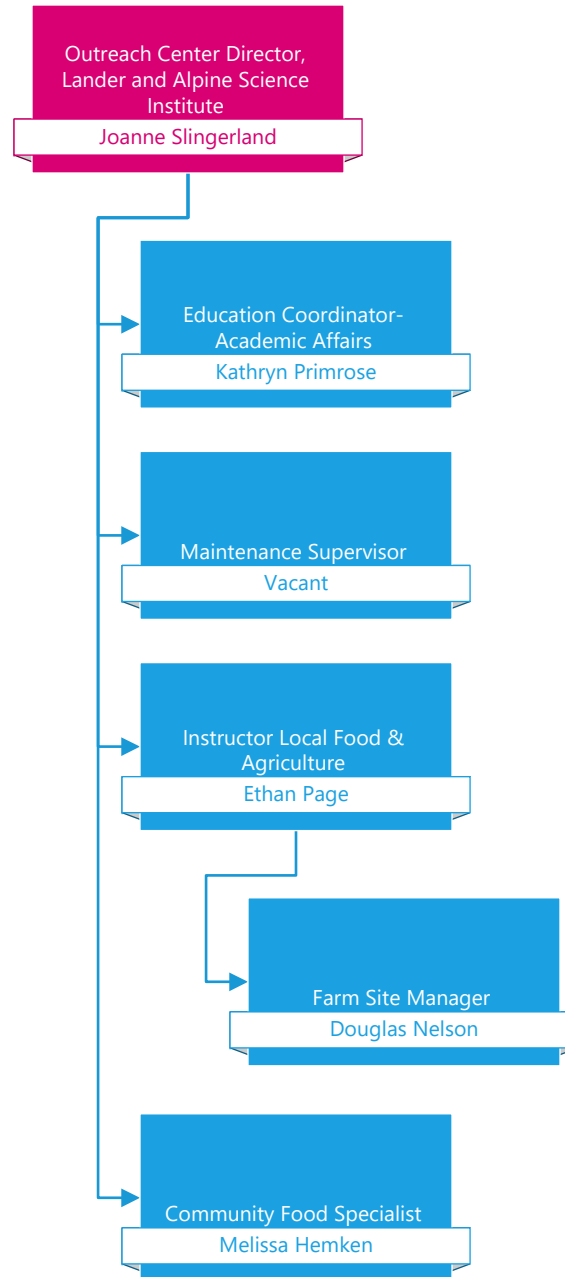




Student Affairs, Continued

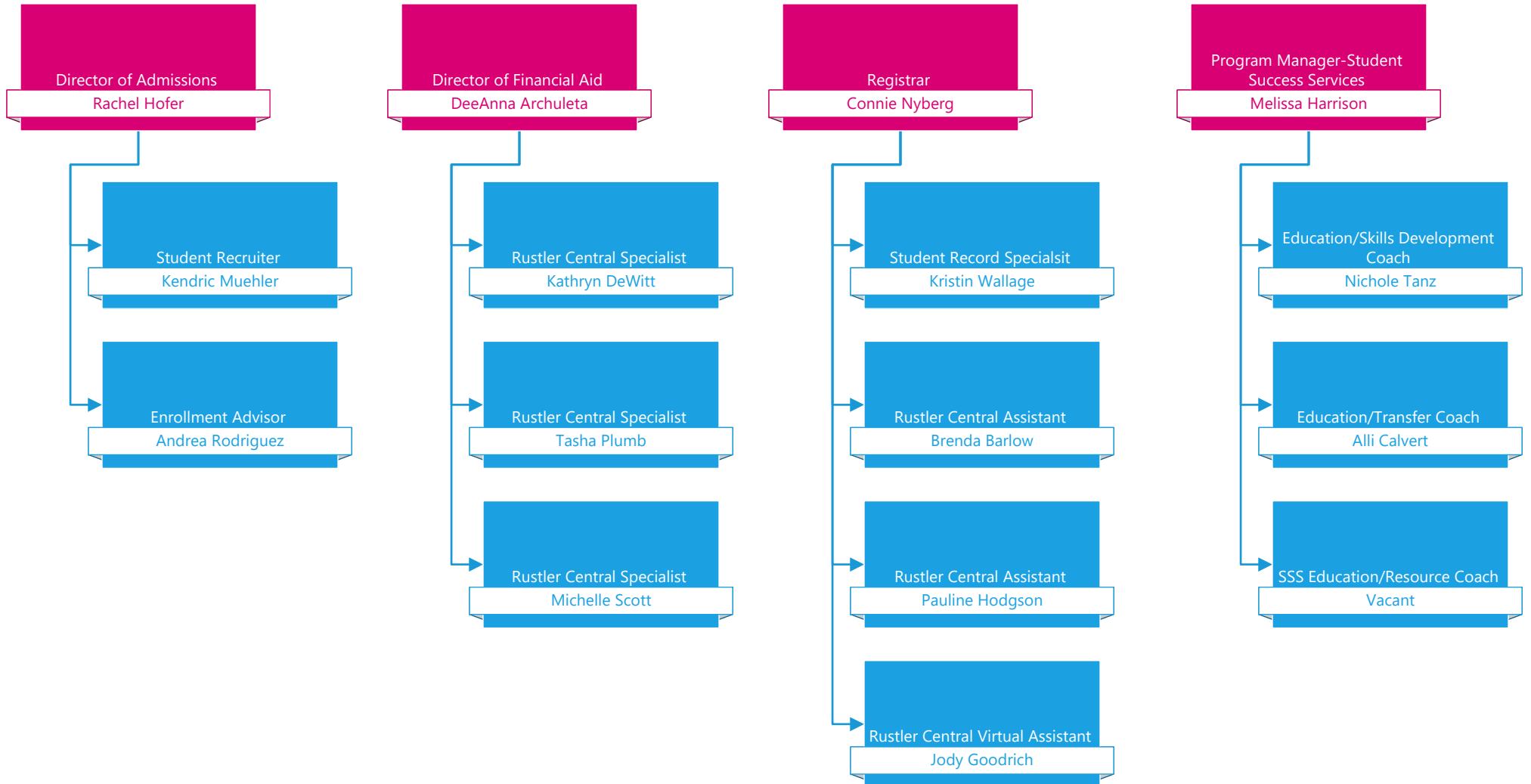
- Athletics
- Residential Life
- Outreach-Dubois
- Student Life Leadership
- Community Education

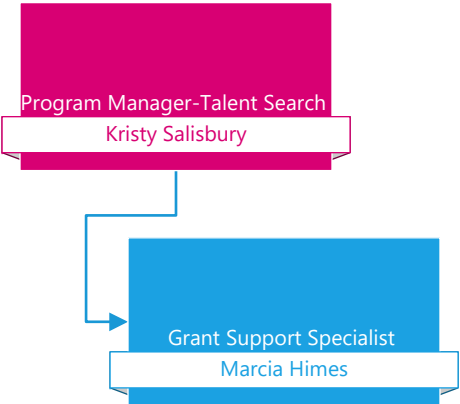
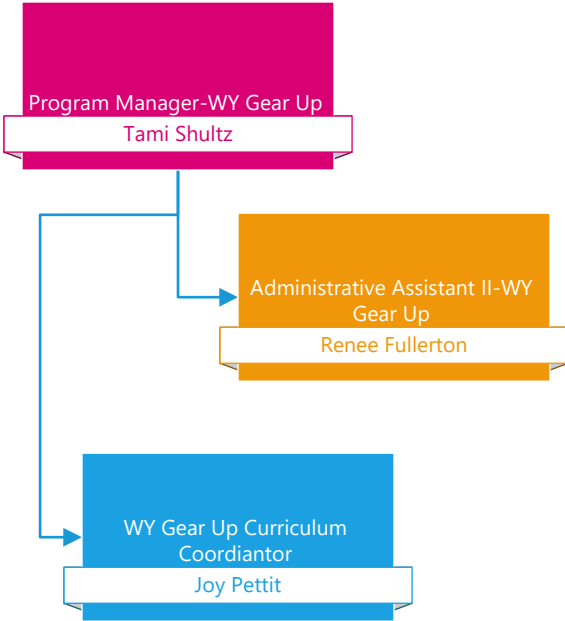
Lander and Alpine Science Institute



Student Affairs, Continued

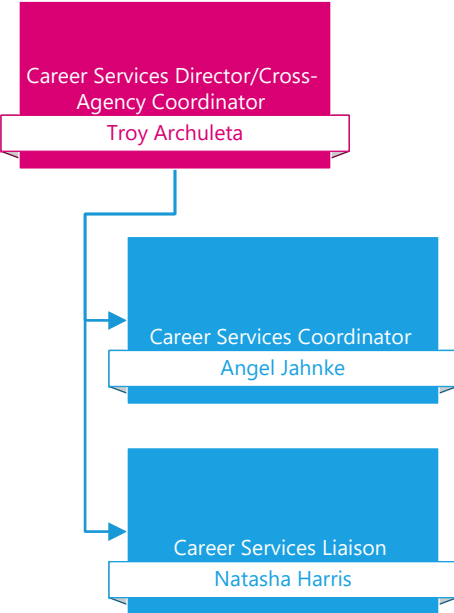
- Admissions
- Financial Aid
- Registrar
- Student Success Services



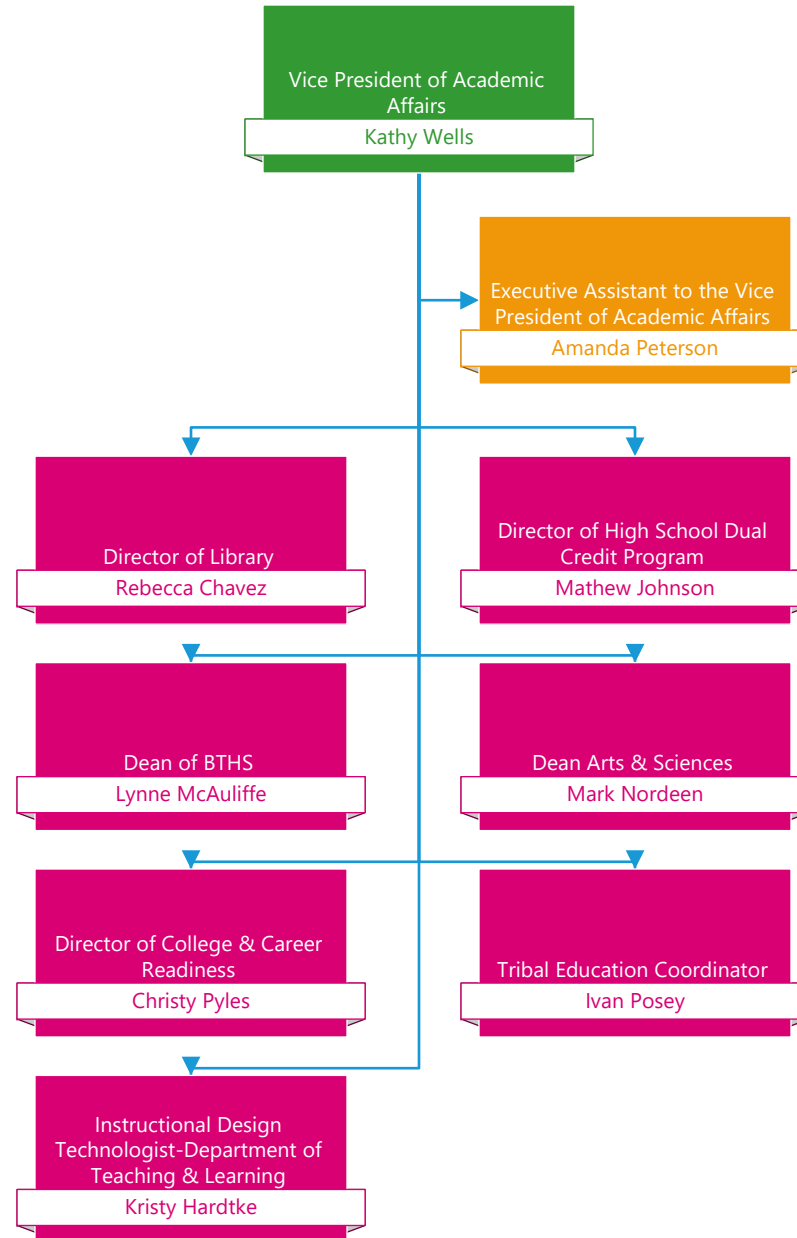


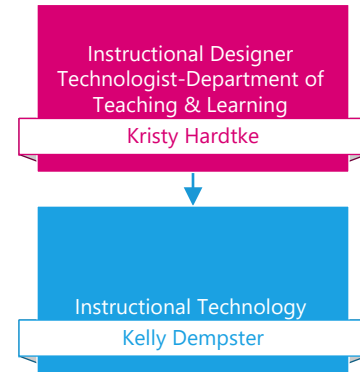
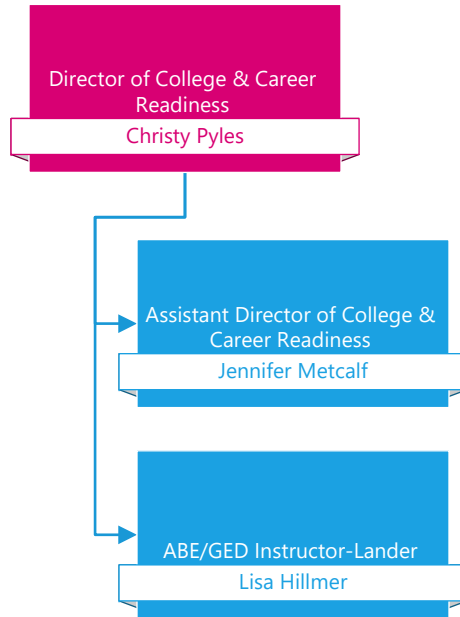
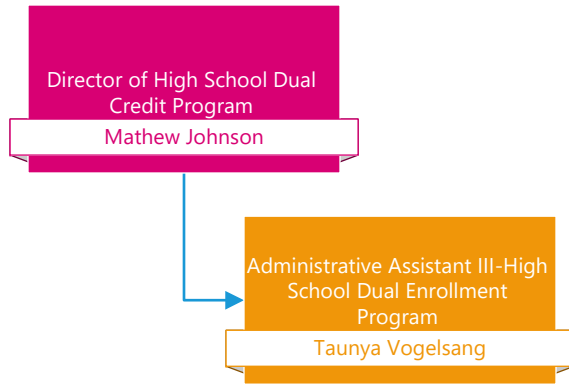
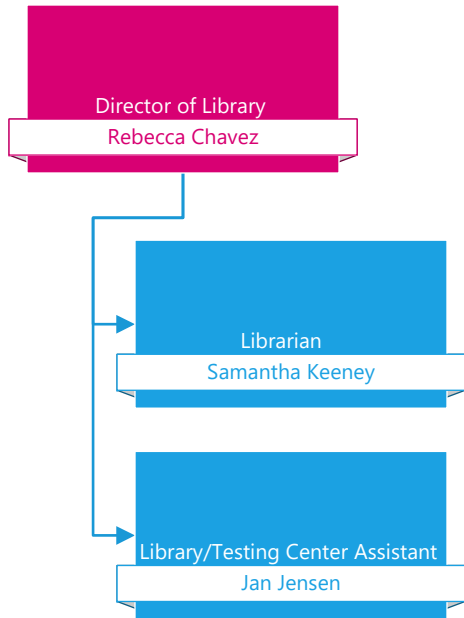
Student Affairs, Continued

- Upward Bound
- WY Gear Up
- Talent Search
- Career Services



Academic Affairs

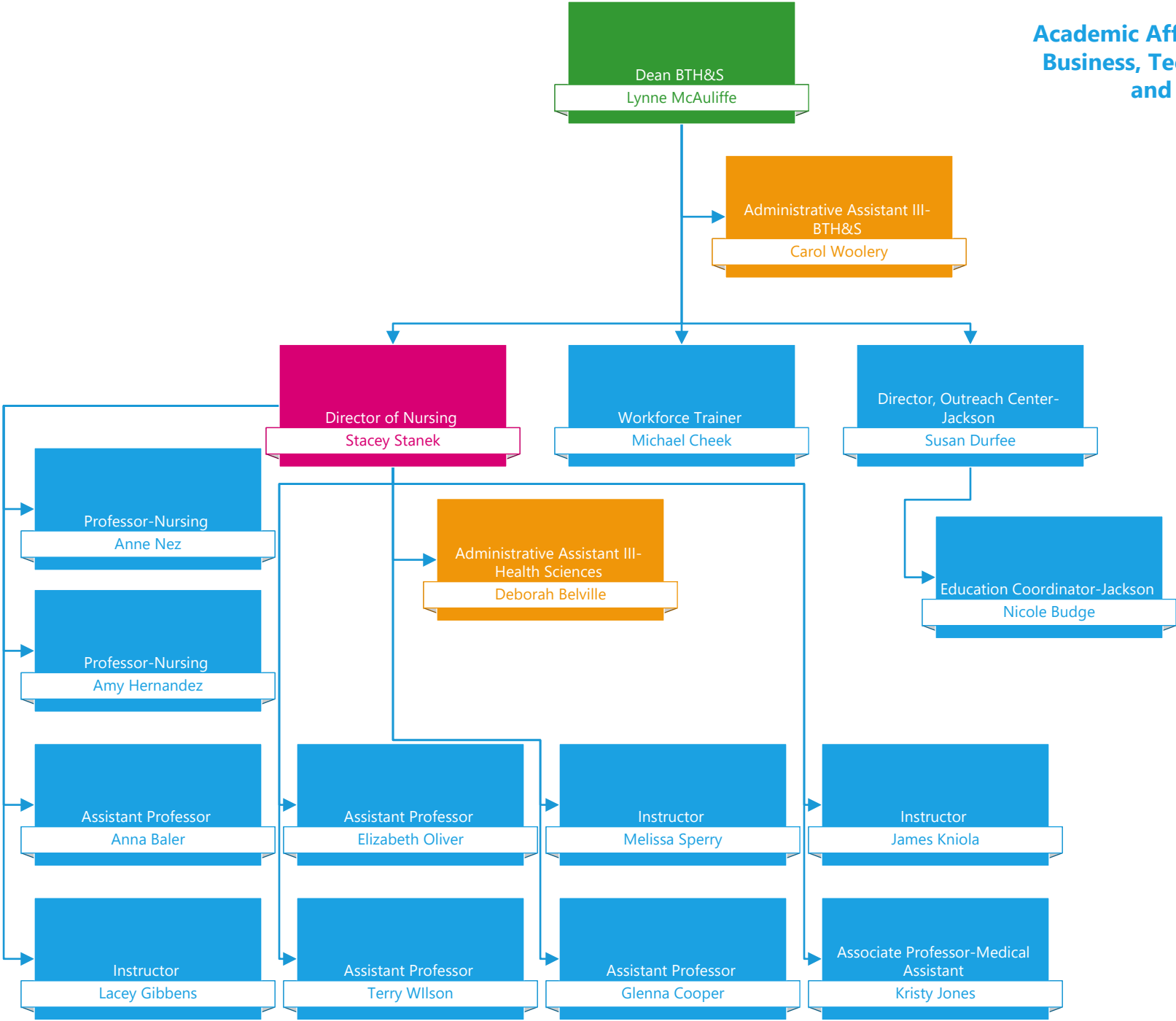




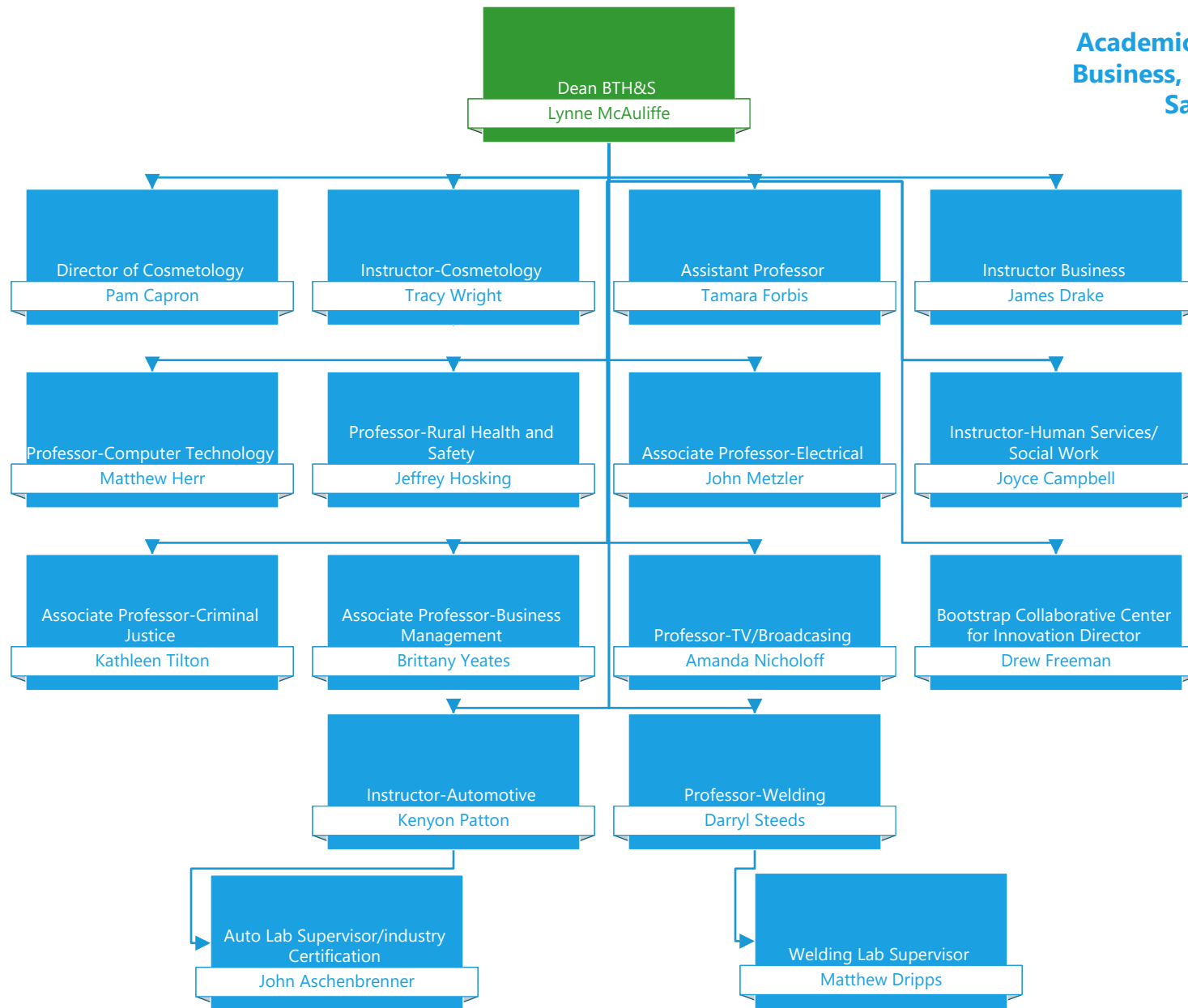
Academic Affairs, Continued

- Library
- High School Dual Credit Program
- College & Career Readiness
- Teaching & Learning

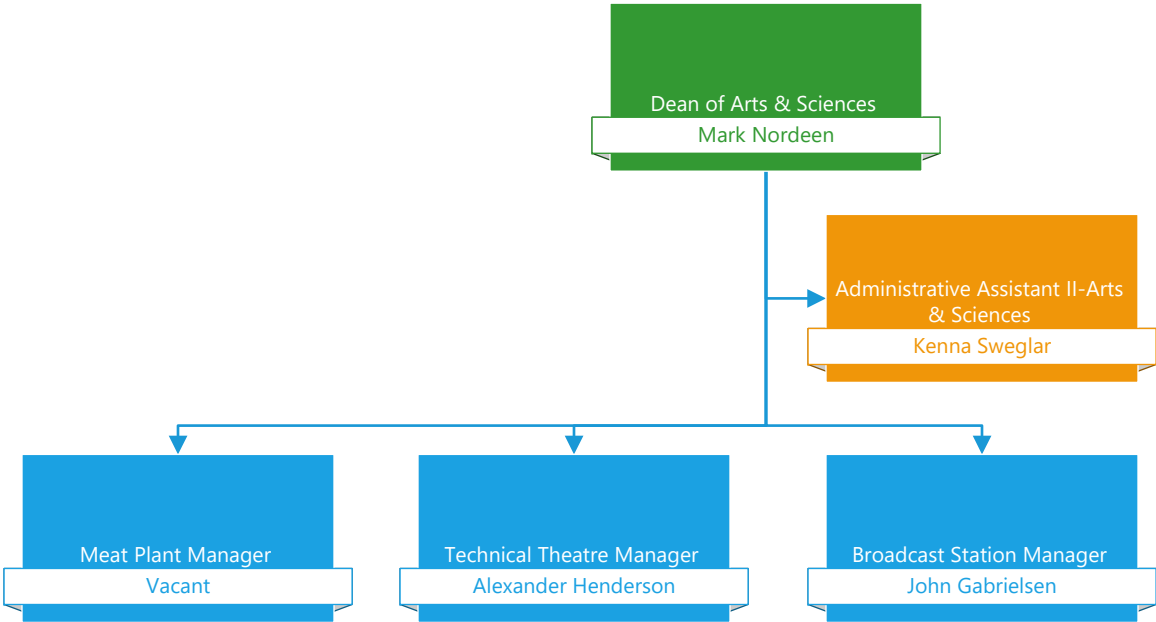
**Academic Affairs, Continued
Business, Technical, Health
and Safety**



Academic Affairs, Continued Business, Technical, Health & Safety Faculty



Academic Affairs, Continued
Arts & Sciences



Dean of Arts & Sciences
Mark Nordeen

**Academic Affairs, Continued
Arts & Sciences-Faculty**



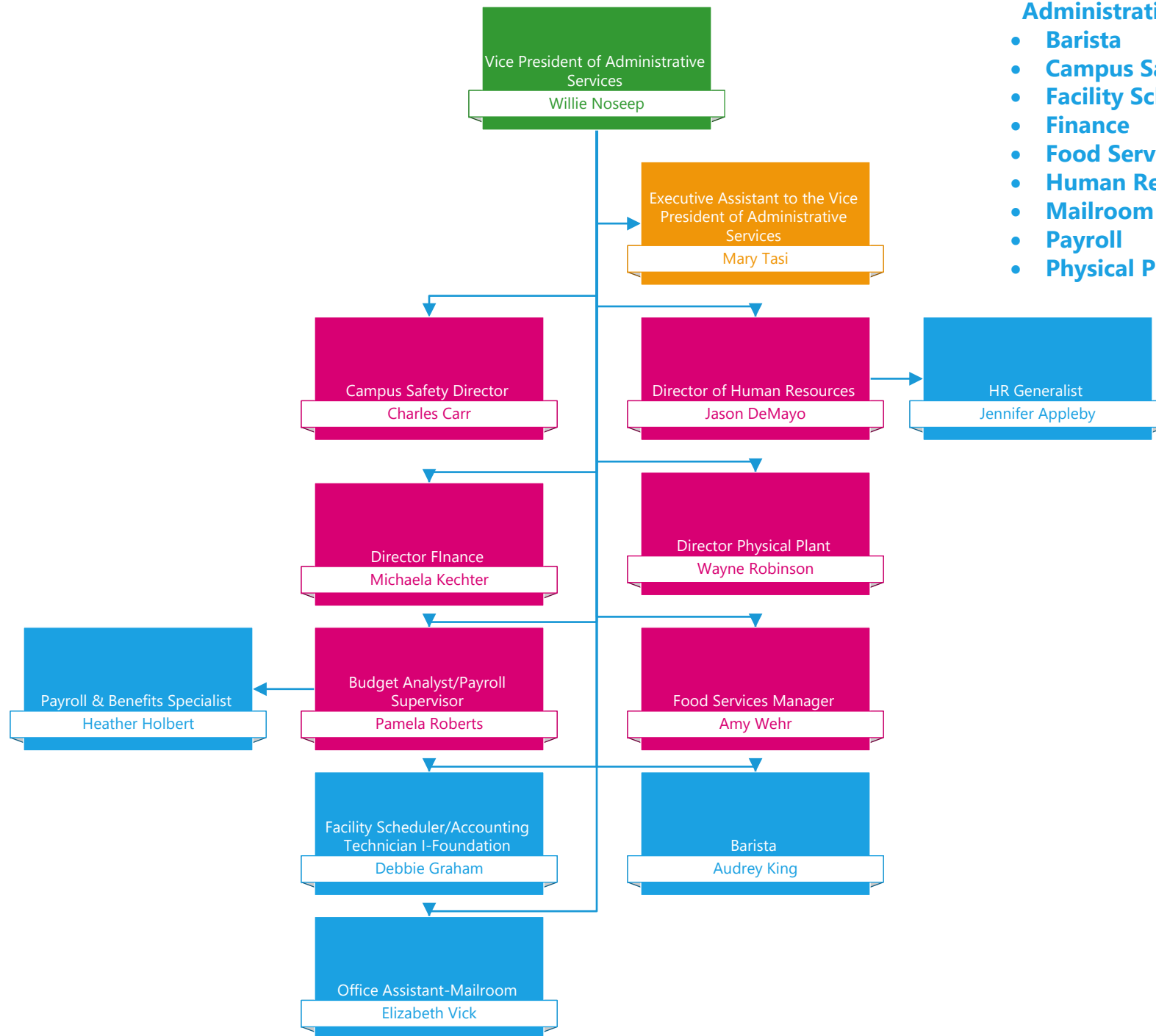
Professor Equine Studies
Jennifer Cole

Assistant Professor Psychology
Joseph Fountain

GIS and Expedition Science
Instructor
Mara Gans

Assistant Professor/Program
Director Theatre
Joey West

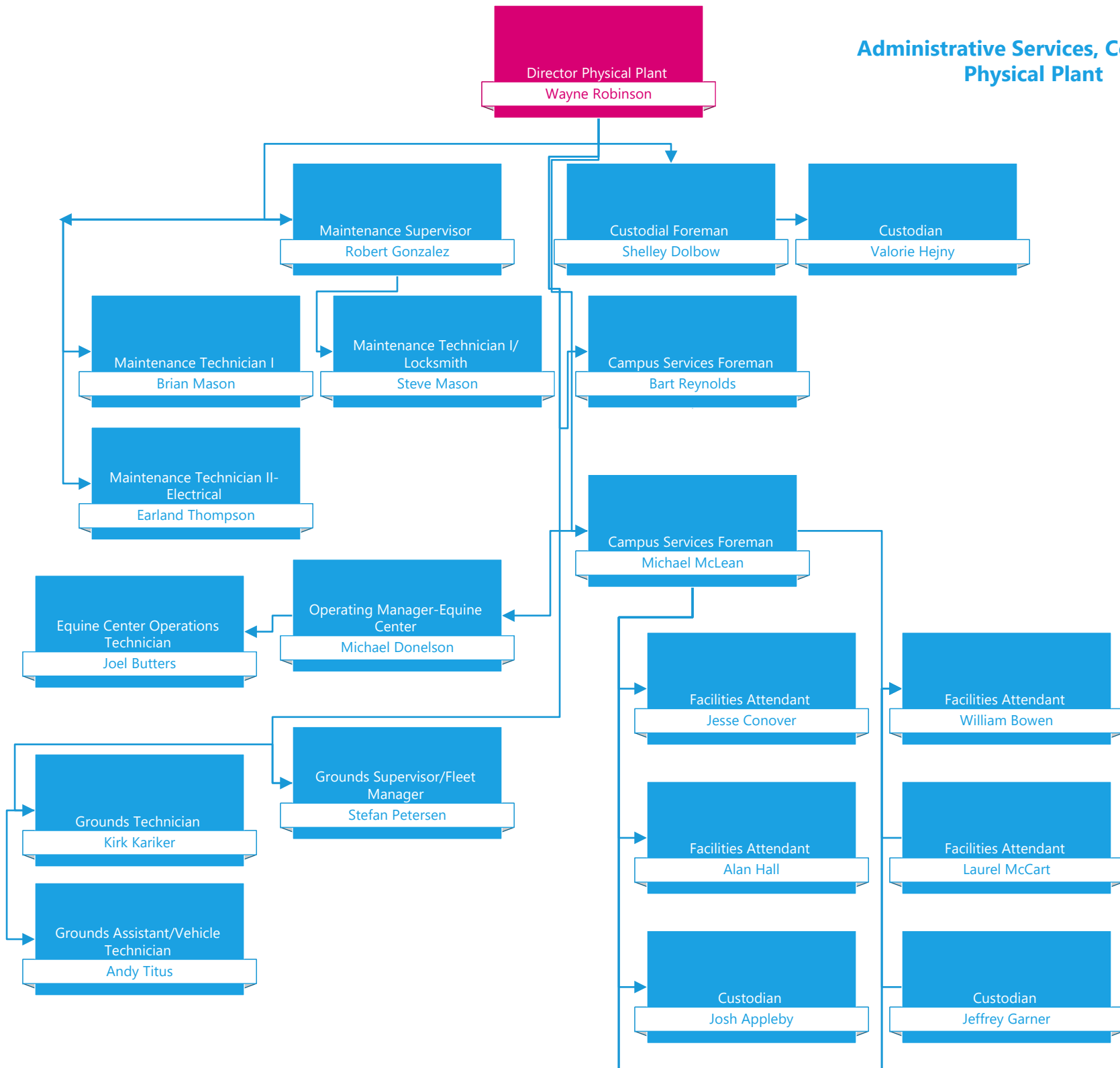
Education Instructor
Vonda Wells

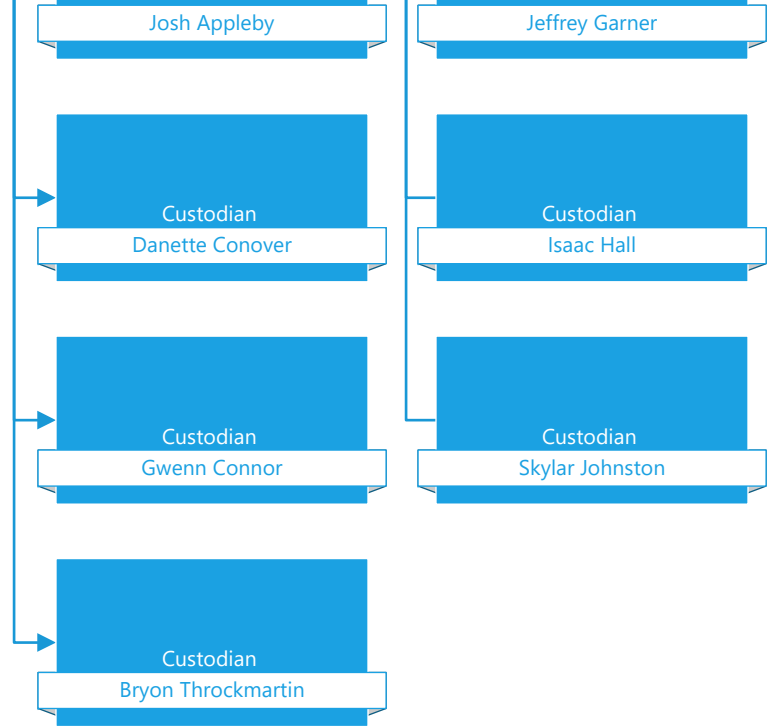


Administrative Services

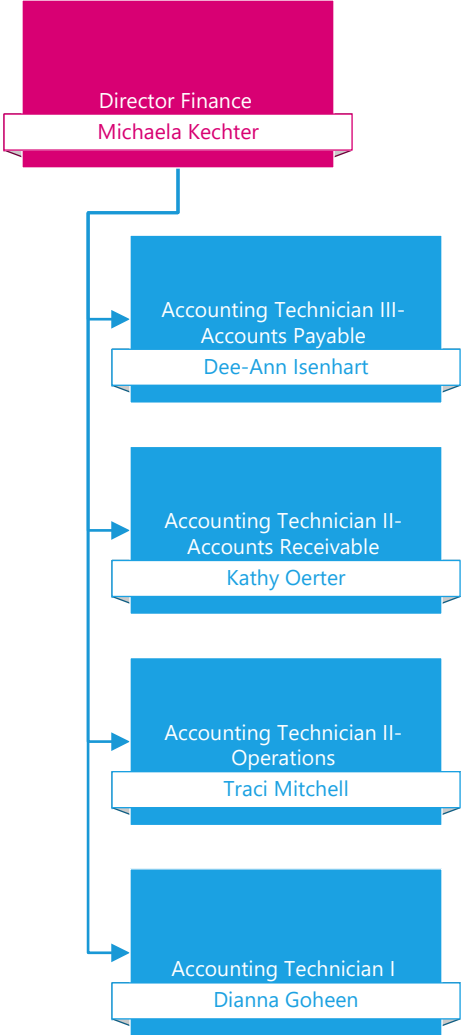
- **Barista**
- **Campus Safety**
- **Facility Scheduling**
- **Finance**
- **Food Services**
- **Human Resources**
- **Mailroom**
- **Payroll**
- **Physical Plant**

Administrative Services, Continued Physical Plant



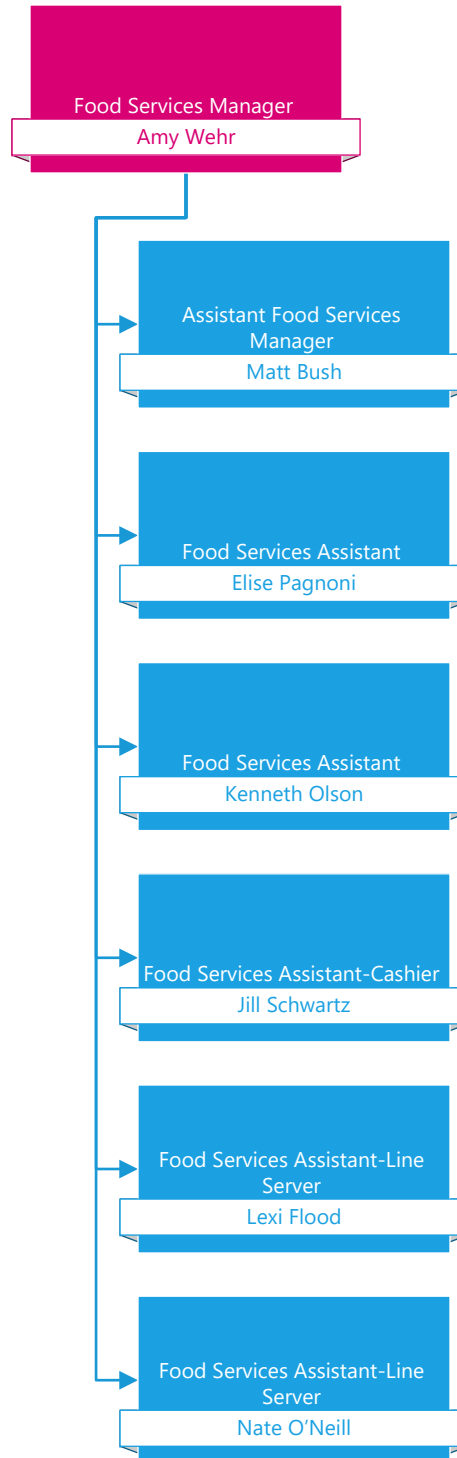
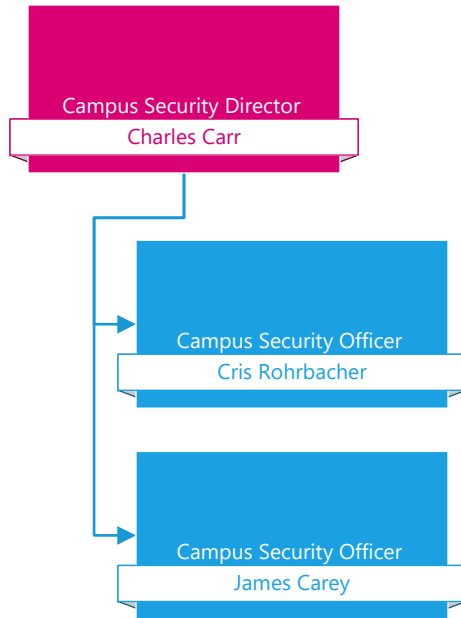


**Administrative Services, Continued
Finance**



Administrative Services, Continued

- Campus Safety
- Food Service



Information Technology

